

# Buckeye Elementary School District

Maricopa County

Efficiency peer groups 8 and T-2, Achievement peer group 13<sup>1</sup>

Legislative district(s): 4 and 13

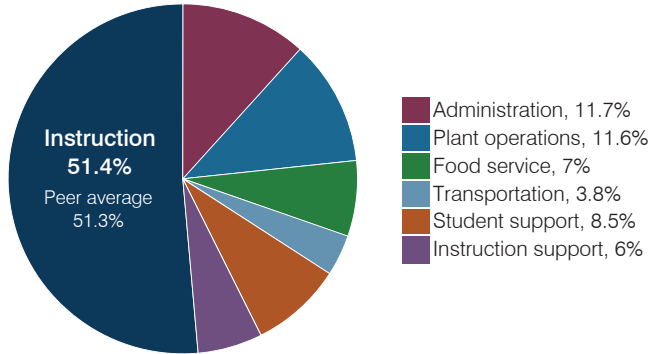
District size, location: Medium-large, Suburb

Students attending: 4,665

Number of schools: 6

## OPERATIONAL EFFICIENCY

### Spending by operational area



### Efficiency measures relative to peer averages

Operational area	Measure	District	Peer average	State average
Administration	Cost per pupil	\$864	\$974	\$844
	Students per administrative position	79	68	67
Plant operations	Cost per square foot	\$7.56	\$6.31	\$6.30
	Square footage per student	113	147	155
Food service	Cost per meal	\$2.42	\$2.75	\$2.88
Transportation	Cost per mile	\$3.84	\$5.31	\$3.84
	Cost per rider	\$847	\$1,178	\$1,198

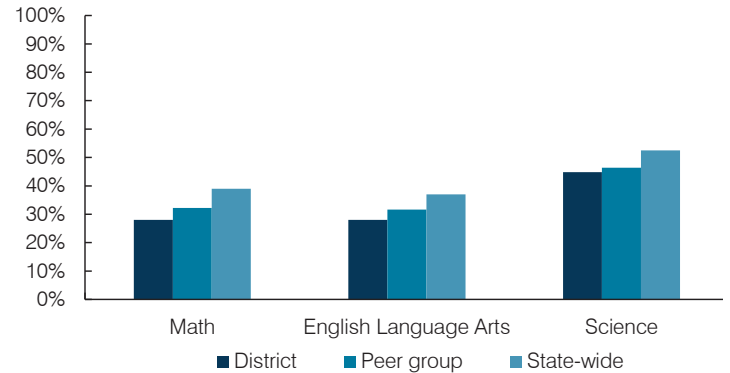
Very low   Low   Comparable   High   Very high

### Per pupil spending

Spending by area	District		Peer average 2017	State average 2017
	2016	2017		
Instruction	\$ 3,621	\$ 3,793	\$ 4,164	\$ 4,377
Administration	791	864	974	844
Plant operations	767	851	909	977
Food service	487	517	640	422
Transportation	263	282	327	381
Student support	536	625	626	679
Instruction support	365	443	559	461
<b>Total operational</b>	<b>\$ 6,830</b>	<b>\$ 7,375</b>	<b>\$ 8,199</b>	<b>\$ 8,141</b>
Land and buildings	\$ 408	\$ 1,383	\$ 924	\$ 691
Equipment	317	387	582	424
Interest	78	148	255	236
Other	114	156	146	161
<b>Total nonoperational</b>	<b>\$ 917</b>	<b>\$ 2,074</b>	<b>\$ 1,907</b>	<b>\$ 1,512</b>
<b>Total per pupil spending</b>	<b>\$ 7,747</b>	<b>\$ 9,449</b>	<b>\$ 10,106</b>	<b>\$ 9,653</b>

## STUDENT ACHIEVEMENT, STUDENT AND TEACHER MEASURES, AND REVENUES

### Students who passed state assessments



### Student and teacher measures

Measure	District	Peer average	State average
Attendance rate	94%	94%	94%
Graduation rate (2016)	N/A	N/A	N/A
Poverty rate (2016)	21%	25%	22%
Special education population	13%	12%	12%
Students per teacher	18.5	19.1	18.5
Average teacher salary	\$37,778	\$43,084	\$48,372
Amount from Prop 301	\$5,477	\$4,885	\$5,840
Average years of teacher experience	7.5	8.3	11.3
Percentage of teachers in first 3 years	32%	30%	19%

### Per pupil revenues

Revenues by source	District		Peer average 2017	State average 2017
	2016	2017		
Federal	\$ 879	\$ 1,150	\$ 1,848	\$ 1,318
State	4,440	4,608	3,857	3,831
Local	2,368	2,649	4,627	4,443
<b>Total per pupil revenues</b>	<b>\$ 7,687</b>	<b>\$ 8,407</b>	<b>\$ 10,332</b>	<b>\$ 9,592</b>

#### Select revenues from common sources

	District 2016	District 2017	Peer average	State average
Equalization formula funding	\$ 5,019	\$ 5,208	\$ 5,145	\$ 5,503
Amount from Prop 123	232	241	236	245
Prop 123 additional funding	43	44	43	46
Grants	930	1,214	1,915	1,185
Donations and tax credits	28	44	54	89

#### Select revenues from less common sources

	District 2016	District 2017	Number of peers receiving
Desegregation	\$ 336	\$ 345	4 of 19
Small school adjustment	0	0	0 of 19
Federal impact aid	0	0	0 of 19
Voter-approved levy increases	829	816	19 of 19

<sup>1</sup> See Appendix A for information such as districts included in each peer group and Appendix B for sources and methodology.

**Instructional spending percentage**

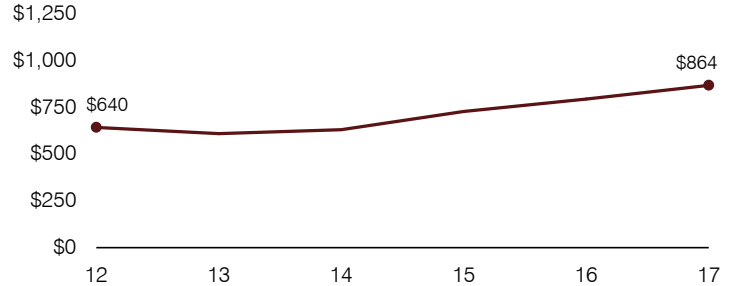
Year:	2001	2002	2003	2004	2005	2006	2007	2008	2009	2010	2011	2012	2013	2014	2015	2016	2017
Percentage:	53.9	58.6	60.1	57.9	61.4	60.3	63.0	60.8	54.9	55.4	56.6	52.0	53.3	54.1	53.7	53.0	51.4

**OPERATIONAL TRENDS AND FINANCIAL STRESS ASSESSMENT**  
Fiscal years as indicated

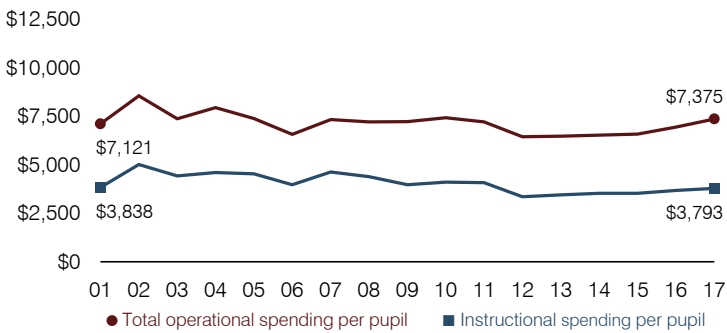
**5-year spending trend (2012 through 2017)**

Total operational spending per pupil, adjusted for inflation, increased by 14 percent. The percentage of dollars spent on instruction varied year to year, decreasing slightly overall from 52 to 51.4 percent. Overall, as a percentage of total operational spending, administration and student support increased while plant operations decreased substantially and food service decreased slightly.

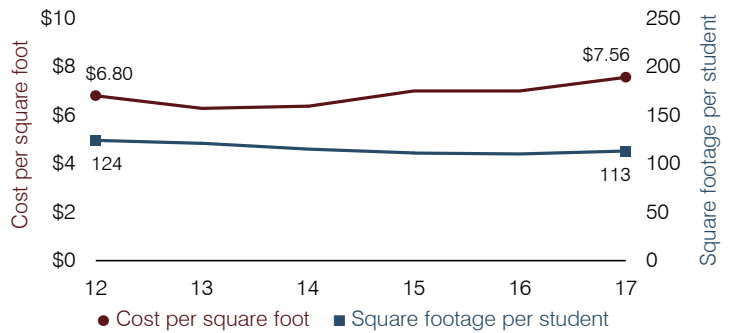
**Administrative cost per pupil**



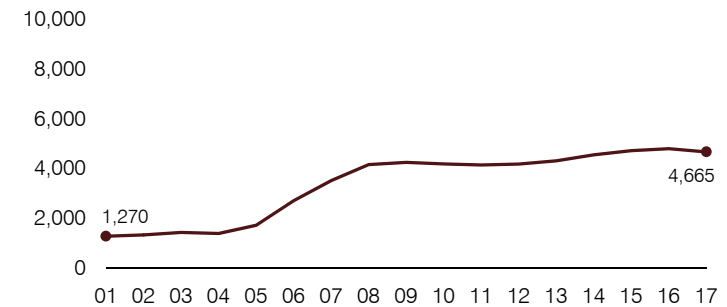
**Total operational and instructional spending per pupil (inflation adjusted to 2017 dollars)**



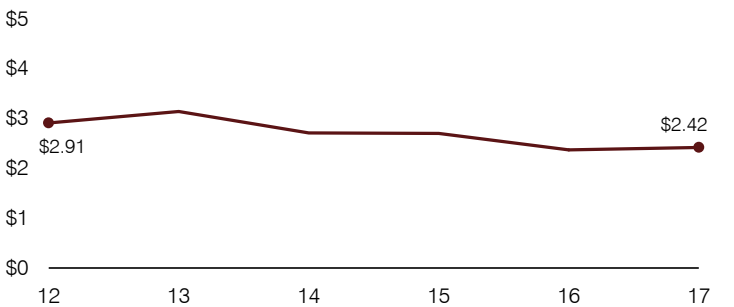
**Plant cost per square foot and square footage per student**



**Students attending**



**Food service cost per meal**



**Financial stress assessment**

Overall financial stress level:

**Low**

Measure: 2015 through 2017

Assessment

Change in number of district students	Steady
Spending exceeded operating/capital budgets	No overspending
Spending increase election results	Voter-approved
Operating reserve percentage, Trend	6.9%, Increasing
Years of capital reserve held	More than 3 years
Current financial and internal control status	Compliant

**Low**      **Moderate**      **High**

**Transportation costs per mile and per rider**

