

# Buckeye Elementary School District

Maricopa County

Efficiency peer groups 8 and T-2, Achievement peer group 14

Legislative district(s): 4 and 13

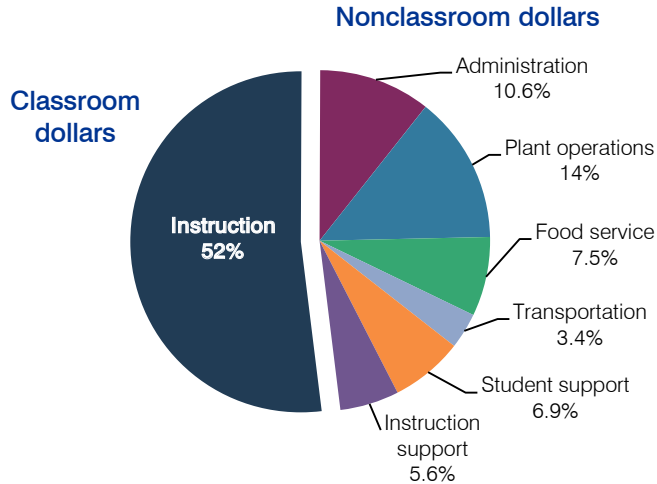
District size / location: Medium-Large, Suburb

Students attending: 4,174

Number of schools: 6

## OPERATIONAL EFFICIENCY

### Spending by operational area



### 5-year spending trend

Total spending per pupil decreased by 2 percent. Spending in the classroom varied year to year, decreasing overall from 63 to 52 percent. Spending on plant operations and student support increased substantially, and spending on administration and food service increased. Spending on other nonclassroom areas varied year to year.

### Cost measures relative to peer averages

Operational area	Measure	District	Peer average	State average
Administration	Cost per pupil	\$640	\$796	\$736
	Students per administrator	95	75	66
Plant operations	Cost per square foot	\$6.80	\$6.25	\$6.09
	Square footage per student	124	131	152
Food service	Cost per meal equivalent	\$2.91	\$2.45	\$2.47
Transportation	Cost per mile	\$3.93	\$4.84	\$3.50
	Cost per rider	\$634	\$844	\$982

Very low   Low   Comparable   High   Very high

### Per-pupil spending by operational area

	District		Peer average	State average	National average
	2011	2012	2012	2012	2010
<b>Total</b>	<b>\$6,574</b>	<b>\$6,054</b>	<b>\$6,968</b>	<b>\$7,475</b>	<b>\$10,652</b>
<b>Classroom dollars</b>	<b>3,718</b>	<b>3,148</b>	<b>3,582</b>	<b>4,053</b>	<b>6,526</b>
<b>Nonclassroom dollars:</b>	<b>2,856</b>	<b>2,906</b>	<b>3,386</b>	<b>3,422</b>	<b>4,126</b>
Administration	725	640	796	736	1,139
Plant operations	781	846	811	928	1,012
Food service	424	455	523	382	405
Transportation	214	214	271	362	443
Student support	438	415	522	578	592
Instruction support	274	336	463	436	535

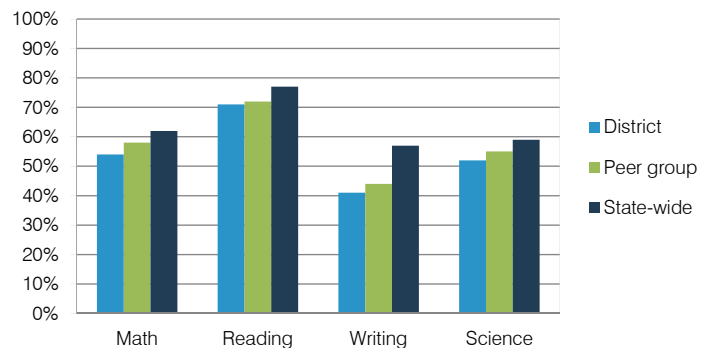
## STUDENT ACHIEVEMENT, TEACHER MEASURES, AND FINANCIAL ASSESSMENT

### ADE-reported district and school letter grades

District grade: **C**

Grade	Number of schools	Percentage of schools
A	0	0%
B	2	33%
C	4	67%
D	0	0%
F	0	0%
Not rated	0	0%

### Percentage of students who met state standards (AIMS)



### Student and teacher measures

Measure	District	Peer average	State average
Attendance rate	95%	95%	94%
Graduation rate (2011)	N/A	N/A	N/A
Poverty rate (2011)	25%	25%	25%
Students per teacher	18.4	19.8	18.1
Average teacher salary	\$35,159	\$40,307	\$45,193
Amount from Proposition 301	\$2,606	\$2,532	\$3,195
Average years of teacher experience	5.9	7.3	11.0
Percentage of teachers in first 3 years	33%	27%	16%

### Financial stress assessment

Overall financial stress level: **Low**

Measure: 2010 through 2012

Measure	Assessment
Number of students attending	Steady
Spending exceeded operating/capital budgets	No overspending
Spending increase election results	No election held
Operating reserve percentage (max. 4%), trend	3.0%, Varying
Years of capital reserve held	More than 3 years
Current financial and internal control status	Compliant

Stress level

